

# CHOOSING THE COLLEGE ENVIRONMENT FOR YOU

---

PRESENTED BY MRS. NOEL AND MS. DOERNER



# SCHOOL SIZE

---

## LARGER SCHOOLS

- Florida State University
  - State University, 33,000 Students
- University of Central Florida
  - State University, 64,000 Students
- University of Miami
  - Private University, 11,000 Students

## SMALLER SCHOOLS

- Southeastern University
  - Private University, 5,000 Students
- Lynn University
  - Private University, 2,000 Students
- University of Tampa
  - Private University, 8,000 Students

# LARGER SCHOOLS

---

## PROS

- Plenty of extracurricular activities
- Large variety of classes and majors to choose from
- Large campus variety

## CONS

- Impersonal feel
- Requires discipline
- Requires initiative
- Overwhelming environment

# LARGER SCHOOLS

---

- Class Sizes
  - General Eds, Hundreds
  - Major Courses, Smaller
- Campus Culture
  - Sororities & Fraternities
  - Party Atmosphere



# SMALLER SCHOOLS

---

## PROS

- Smaller class sizes
- More personal interaction with professors and guidance counselors
- Smaller social circles

## CONS

- Less extracurricular activities
- Less classes and majors to choose from

# SMALLER SCHOOLS

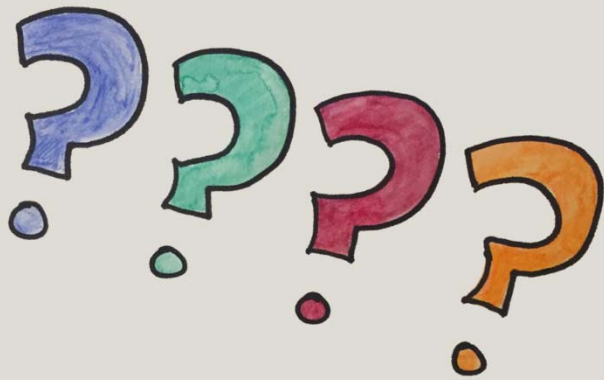
---

- Class Sizes
  - Smaller than average
- Campus Culture
  - Varies from school to school
  - Beneficial to live on campus



# QUESTIONS TO KEEP IN MIND

---



- Accommodations
- Available Majors
- Financial Aid
  - FAFSA, Bright Futures
  - How much is actually covered?
- Living Expenses
- Meal Plans
- Remember: Never sign on the dotted line until you have visited the university and considered the above information!

# QUESTIONNAIRE:

---

- What size student body can you expect from a larger university and a smaller university?
- What is a pro and a con to attending a large university?
- What is a pro and a con to attending a small university?
- What is one question to keep in mind when looking for universities for your child to attend?